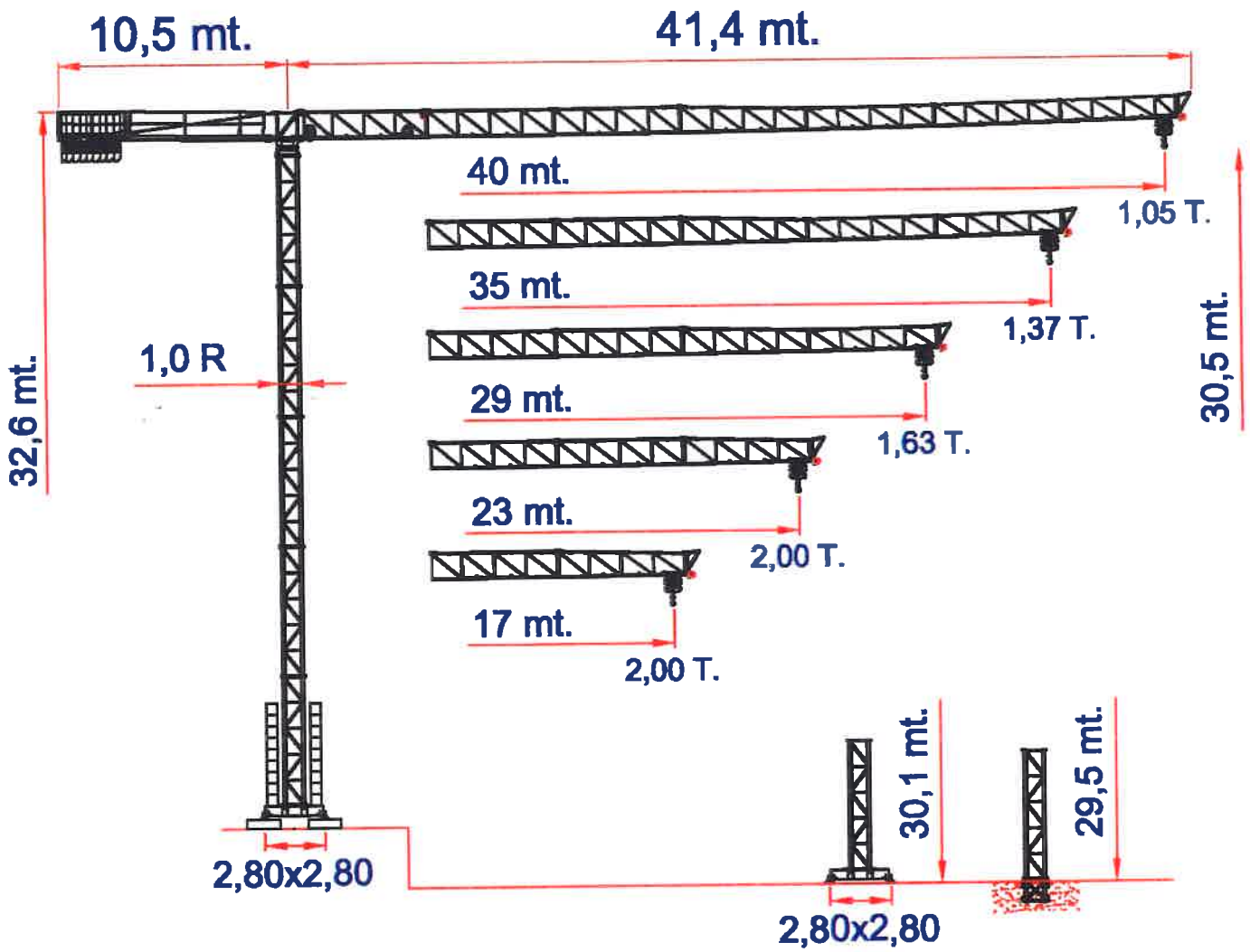


CARATTERISTICHE TECNICHE
Versione Kg. 2.000





DIAGRAMMI DI CARICO Kg.2000 Tiro in II

Braccio - Jib Flèche - Ausleger (mt.)	40		35		29		23		17		11	
Portata Massima a Max Load to Charge Max à Max Tragfähigkeit bis (mt.)	STD		STD		STD		STD		STD		STD	
	22,8		25,0		24,2		23,0		17,0		11,0	
Raggio - Radius Portée - Ausladung (mt.)	Kg.2000											
2	2000		2000		2000		2000		2000		2000	
3	2000		2000		2000		2000		2000		2000	
4	2000		2000		2000		2000		2000		2000	
5	2000		2000		2000		2000		2000		2000	
6	2000		2000		2000		2000		2000		2000	
7	2000		2000		2000		2000		2000		2000	
8	2000		2000		2000		2000		2000		2000	
9	2000		2000		2000		2000		2000		2000	
10	2000		2000		2000		2000		2000		2000	
11	2000		2000		2000		2000		2000		2000	
12	2000		2000		2000		2000		2000		2000	
13	2000		2000		2000		2000		2000		2000	
14	2000		2000		2000		2000		2000		2000	
15	2000		2000		2000		2000		2000		2000	
16	2000		2000		2000		2000		2000		2000	
17	2000		2000		2000		2000		2000		2000	
18	2000		2000		2000		2000		2000		2000	
19	2000		2000		2000		2000		2000		2000	
20	2000		2000		2000		2000		2000		2000	
21	2000		2000		2000		2000		2000		2000	
22	2000		2000		2000		2000		2000		2000	
23	1977		2000		2000		2000		2000		2000	
24	1886		2000		2000							
25	1802		2000		1925							
26	1724		1916		1843							
27	1652		1837		1766							
28	1586		1764		1696							
29	1524		1696		1630							
30	1466		1632									
31	1412		1573									
32	1362		1517									
33	1315		1465									
34	1270		1416									
35	1228		1370									
36	1188											
37	1151											
38	1116											
39	1082											
40	1050											